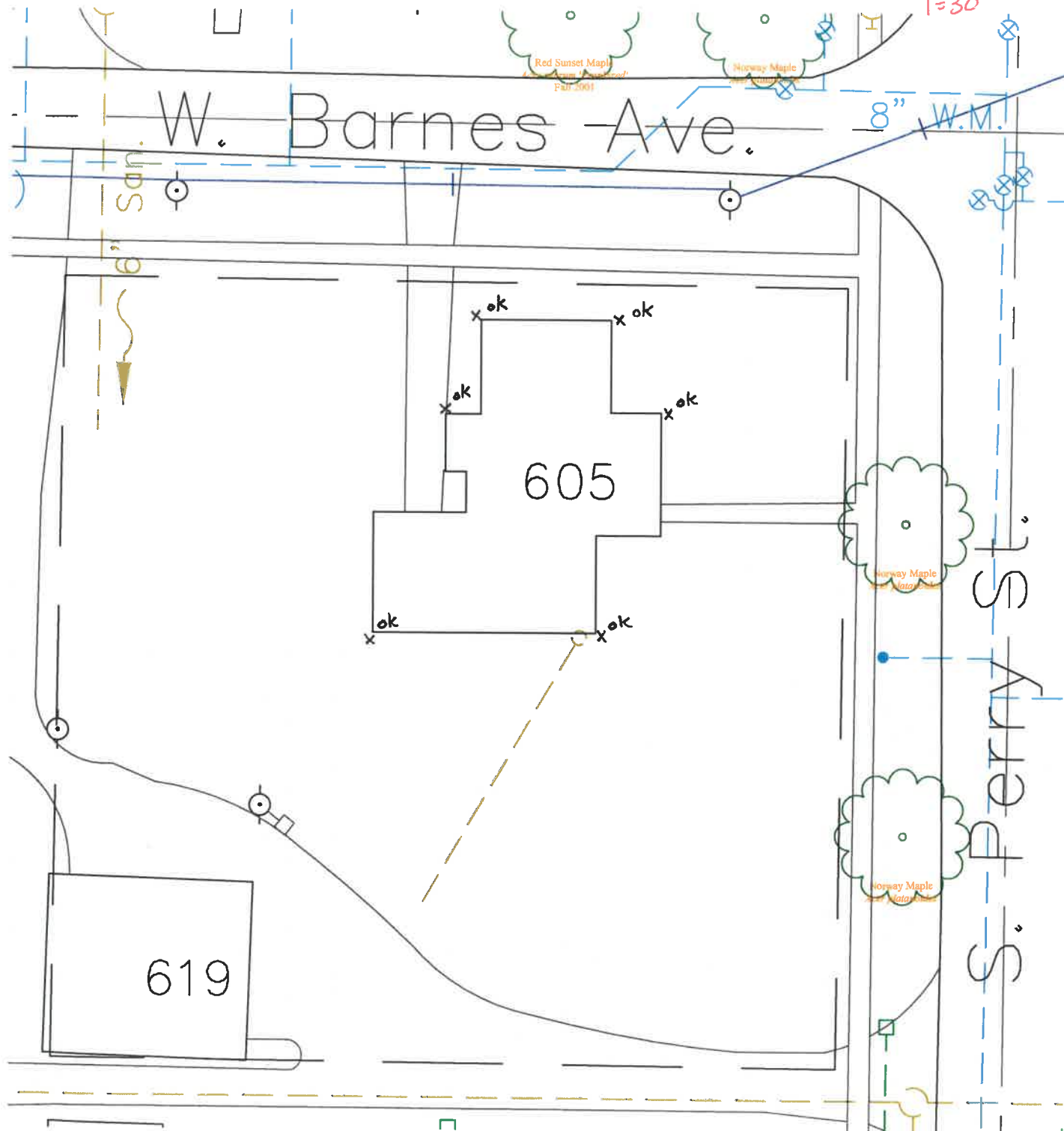


DATE: 4-14-15  
INSPECTED BY: MARTY CROSSLAND  
INVESTIGATION OF ILLEGAL SEWER  
CONNECTIONS. NO ILLEGAL CONNECTIONS  
WERE FOUND AT THIS TIME.

605 SOUTH PERRY STREET

N  
1"=30'



SCANNED